

# ARKA SYNCHRONOUS MOTOR WITH PERMANENT MAGNETS

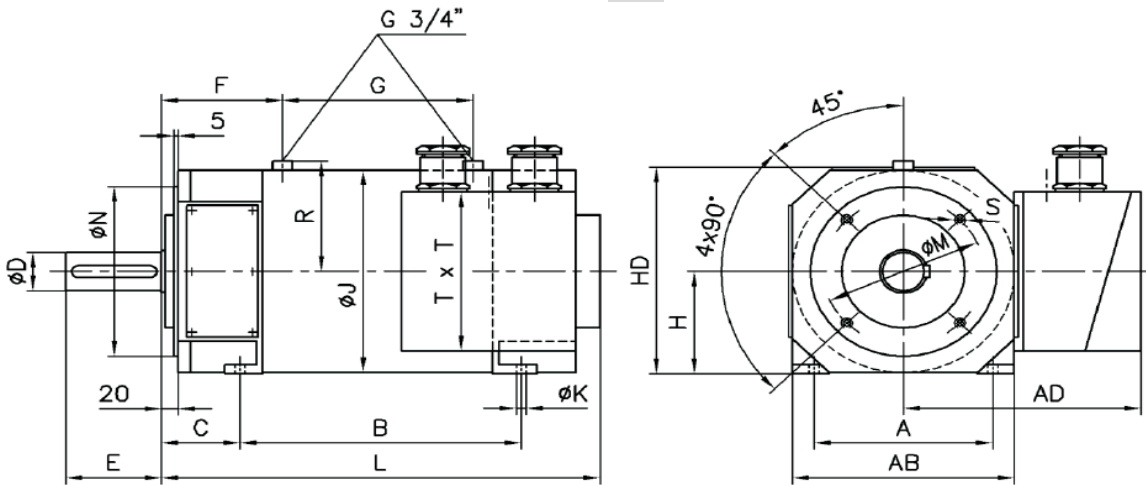
## WATER COOLED MOTOR

- Basic technical parameters for rated speed 2200rpm
- Degree of protection IP54
- Cooling ICW (water cooling)

Framesize	Power output P <sub>2</sub> [kW]	Torque M [Nm]	Max.Speed n <sub>max.</sub> [rpm]	Inertia J <sub>r</sub> [kgm <sup>2</sup> ]	Mass [kg]
SM112ES	19	82	5000	0,0114	66
SM112S	28	122		0,0151	78
SM112M	38	165		0,0188	90
SM112L	45	195		0,0255	102
SM132ES	40	174	4000	0,025	105
SM132S	53	230		0,032	121
SM132M	68	295		0,039	139
SM132L	82	356		0,046	156
SM160ES	80	347	3400	0,086	182
SM160S	108	469		0,104	208
SM160M	128	556		0,122	233
SM160L	142	616		0,14	259
SM180ES	160	695	3200	0,22	294
SM180S	200	868		0,253	326
SM180M	230	998		0,286	358
SM180L	265	1150		0,319	390

## BASIC DIMENSIONS (mm)

- Degree of protection IP54,
- Cooling ICW (water cooling)



Framesize	H	A	AB	B	C	ØD	E	HD	AD	L	ØK	ØM	ØN	S	F	G	R	ØJ	TxT
SM112ES	112	190	228	225	70	38	80	226	230	414	11	184	215	M12	155	75	134	222	160x160
SM112S				275						125									
SM112M				325						175									
SM112L				375						225									
SM132ES	132	216	268	250	89	48	110	266	280	460	11	184	215	M12	162	115	154	262	200x200
SM132S				300						164									
SM132M				350						166									
SM132L				400						168									
SM160ES	160	254	324	300	108	60	140	322	312	524	14	228	265	M16	172	168	185	318	240x240
SM160S				350						173									
SM160M				400						174									
SM160L				450						175									
SM180ES	180	279	364	400	121	70	140	362	332	652	14	228	265	M16	189	264	204	357	240x240
SM180S				450						190									
SM180M				500						191									
SM180L				550						192									