

**Got any questions?  
We're here to help!**

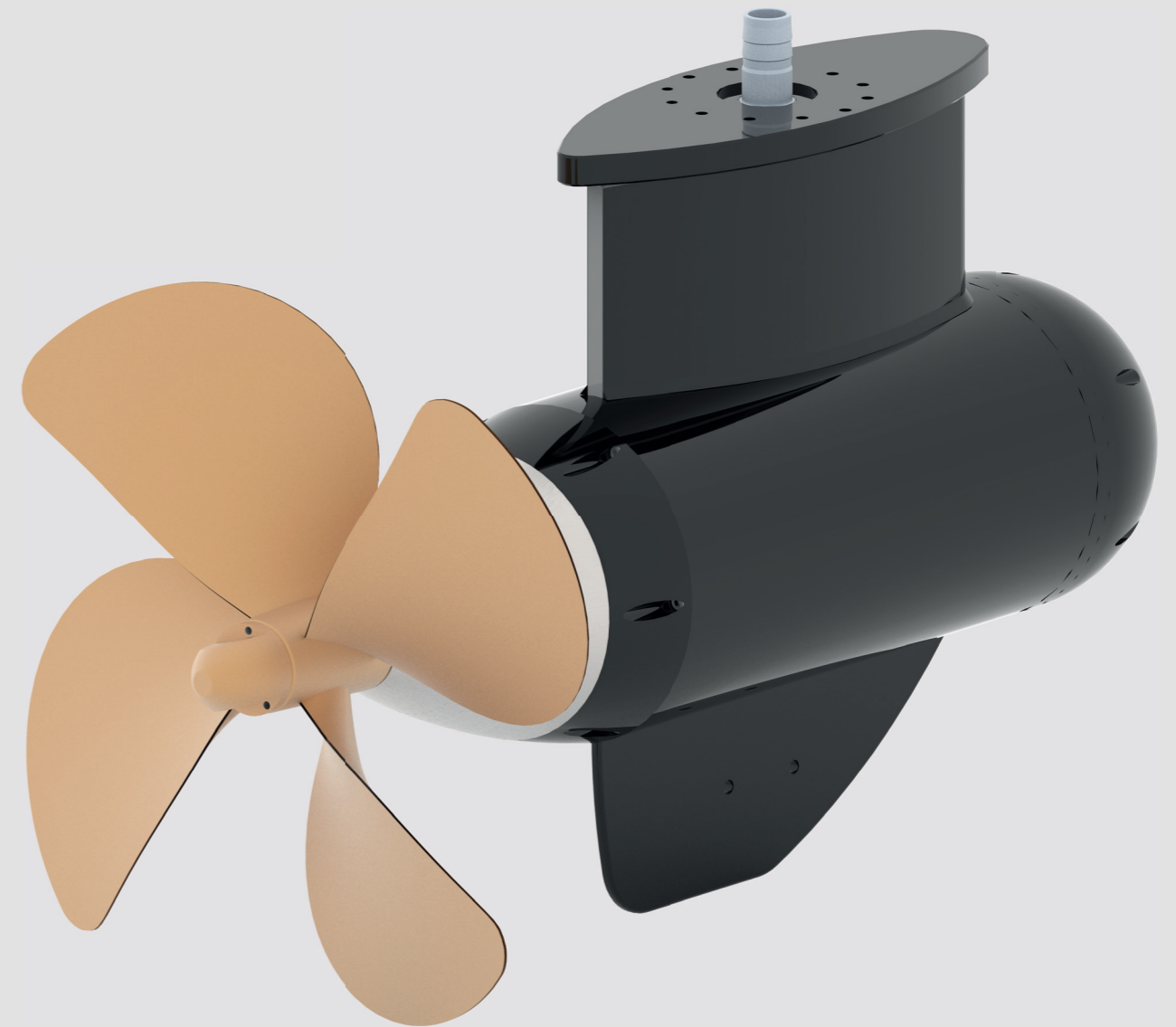
+31 521 36 1099

arka.nl

Do you have any questions or need personal advice? Schedule a consultation with one of our experts to find the best propulsion solution for your customer and application.



Masters  
in electric  
propulsion



**Pod 600**

Continuous power output 55 kW

The Pod 600 provides quiet, powerful performance with efficient direct drive technology. Made from seawater-resistant materials, it is durable, low-emission, and easy to install.

## Specs

Technical data		
	Motor type	SMPM
	Frame size	112 EL
	Nominal bus voltage	560 VDC
	Model	POD
	Maximum stator current	140,8 A
	Rated speed	1500 min <sup>1</sup>
	Rated voltage	560 VDC
	Min. voltage	504 VDC
	Motor constant	2,983 Nm/A
	Rated phase current	119,32 A
	Rated torque	350 Nm
	Rated power S1 @ 350VDC 2300rpm	54978 Watt
	Peak power S2-10	65112 Watt
	Constant Electric	191,40 V/k-rpm
	Induction LS	1,48 mH
	Resistance of winding	89,1 mΩ
	Winding class	F
	Max. operating temperature	120 °C
	Weight	95 kg
	Efficiency @ rated speed-torque	94,23%
	Number of poles	12

Torque map	RPM	Nm
Standstill peak	0	4520,00
Limit point	1615	385,00
No load max	2130	14,00
Standstill nominal	0	320,00
Utilizable	1780	280,00
No load max	2130	14,00

Controller	Type	Zise 10
	Nominal voltage	80-700 VDC
	Continuous current (60min.)	200 A
	Peak current (2min.)	400 A
	Boost current (10sec.)	425 A
	Cooling	Water ICW
	Max. amb. temp.	42 °C
	Efficiency	99,2%

Dimensions (enclosure)	Height	760 mm
	Width	600 mm
	Depth	220 mm
	Weight	38,5 kg
	IP	54

Joystick	Cycle live (more than)	2 Million
	Weight	0,85 kg
	IP	55

Included	Dc-dc converter	
	Input voltage	560 VDC
	Input current	5 A
	Output voltage	24 VDC
	Output current	20 A
	Circulation pump ICW	6 L min.